

2 船舶隔舱密封装置 Bulkhead Seal



CWGM 系列抗冲击型 船舶隔舱密封装置 CWGM Series Anti-Shock Bulkhead Seal

产品特点 Product Features

- ◆ 全剖分式结构，方便安装与维护。
- ◆ 轴系大冲击产生的轴向、径向位移和微小角度变化不易损坏或卡轴，且不影响正常功能。
- ◆ 耐海水腐蚀，寿命长，无需日常维护，无需附加润滑系统及冷却系统。
- ◆ 适用于各类船舶轴系隔舱双向水密封。
- ◆ Easy maintenance due to split structure.
- ◆ Reliability under big displacement caused by shock.
- ◆ Anti-corrosion, strong environmental adaptability, long life span.
- ◆ Applied for marine ship double-sided water seals.

主要参数 Main Specifications

- ◆ 适用轴径: $\Phi 80 \sim \Phi 540\text{mm}$
- ◆ 适用转速: $0 \sim 800\text{rpm}$ (随轴径配定)
- ◆ 适用水压: $\leq 0.15\text{MPa}$
- ◆ 水泄漏量: $\leq \Phi d \times 8 / 100\text{L/h}$
- ◆ Shaft Diameter: $\Phi 80 \sim \Phi 540\text{mm}$
- ◆ Rotating Speed: $0 \sim 800\text{rpm}$
- ◆ Water pressure: $\leq 0.15\text{MPa}$
- ◆ Water Leakage: $\leq \Phi d \times 8 / 100\text{L/h}$

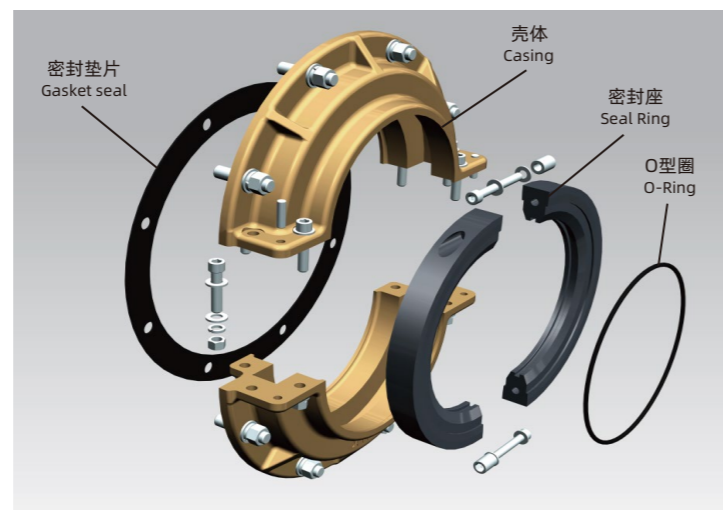
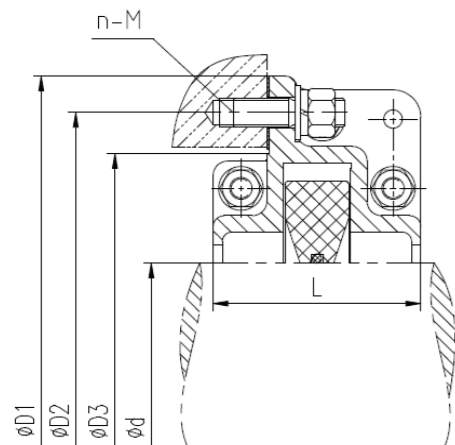
选型原则 Model Selection Principle

- ◆ 根据安装艉轴密封装置处轴径（或轴套外径）和接口尺寸要求选择相应型号规格。
- ◆ 该系列产品需预留足够的维修操作空间。
- ◆ 轴径、接口等可根据用户要求进行设计。
- ◆ Selecting according to the installation of stern shaft sealing device diameter of shaft (or collar diameter) and interface size requirements.
- ◆ Setting aside enough maintenance operation space.
- ◆ Customized design can be done (shaft diameter, connecting interface, etc)

适用标准 Applicable Standard

GJB4000-2000 GJB150.18-1986

尺寸及参数 Dimensions & Parameters



型号 Model	尺寸参数 Dimensions(mm)						技术指标 Technical Specification
	d	D1	D2	D3	L	n-M	水泄漏量 Water leakage (L/h)
CWGM80	80	240	210	180	60	8-M10	≤ 6.4
CWGM90	90						≤ 7.2
CWGM100	100	305	276	238	100	8-M12	≤ 8.0
CWGM110	110						≤ 8.8
CWGM120	120						≤ 10
CWGM130	130	350	325	300	112	8-M16	≤ 10
CWGM140	140						≤ 11
CWGM150	150						≤ 12
CWGM160	160						≤ 13
CWGM170	170	405	365	320	112	8-M16	≤ 14
CWGM180	180						≤ 15
CWGM190	190						≤ 15
CWGM200	200						≤ 16
CWGM210	210						≤ 17
CWGM220	220	435	394	358	112	8-M16	≤ 18
CWGM230	230						≤ 18
CWGM240	240						≤ 19
CWGM250	250						≤ 20
CWGM260	260	530	490	455	135	8-M16	≤ 21
CWGM270	270						≤ 22
CWGM280	280						≤ 22
CWGM290	290	560	520	480	130	12-M16	≤ 23
CWGM300	300						≤ 24
CWGM320	320						≤ 26
CWGM340	340						≤ 27
CWGM360	360	630	578	530	150	12-M20	≤ 29
CWGM380	380						≤ 30
CWGM400	400						≤ 32
CWGM420	420						≤ 34
CWGM440	440						≤ 35
CWGM460	460	720	670	630	152	12-M20	≤ 37
CWGM480	480						≤ 38
CWGM500	500						≤ 40
CWGM520	520	850	810	760	158	16-M16	≤ 42
CWGM540	540						≤ 43

注：表列参数为标准设计供参考，可按用户实际需求进行设计制造。
Customized design can be done.